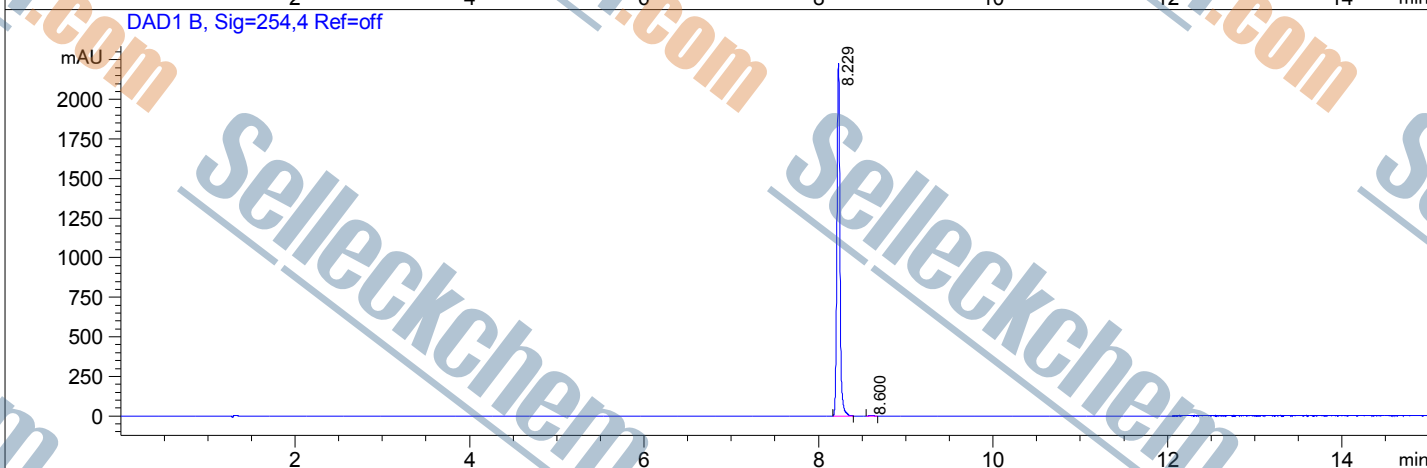
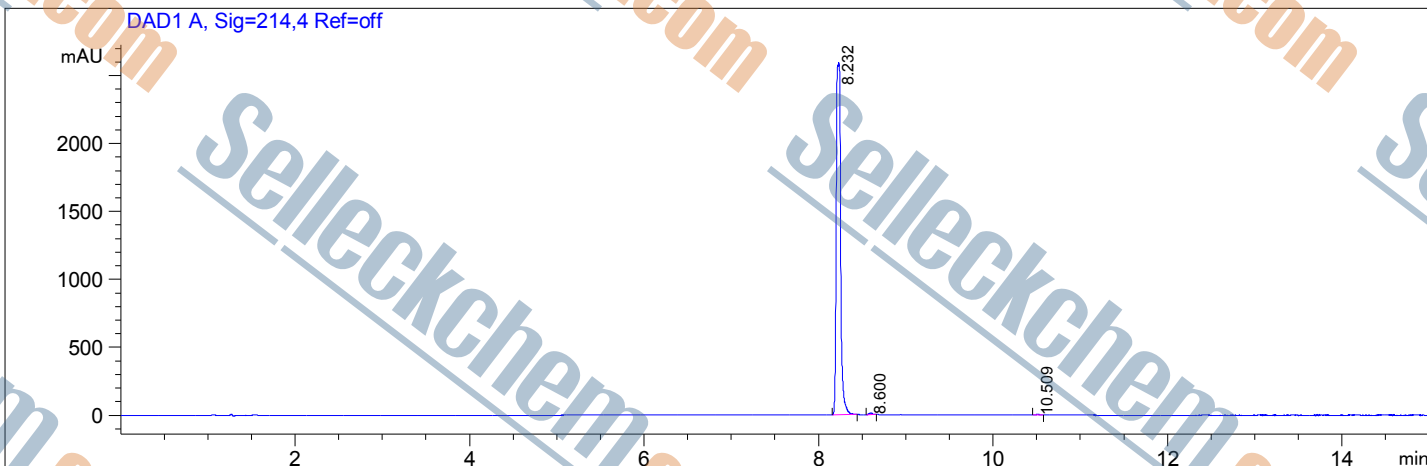


File D:\DATA\T28\CP-000F1803-00341-HPLCA004.D

**Sample Name** : CP-000F1803 **Location** : P2-F-01  
**Acq. Operator** : HPLCA004 **Inj** : 0  
**Spec. Reported** : MS Integration **Inj Volume** : 1 ul  
**Acq. Method** : C:\Chem32\1\METHODS\2-HPLC-15MIN.M  
**Analysis Method** : C:\Chem32\1\METHODS\2-HPLC-15MIN.M  
**Sample Info** :  
**Method Info** : Mobile Phase: A: water(0.01%TFA) B: ACN(0.01%TFA)  
 Gradient: 0min 5%B,3min 5%B,10min 95%B,15min 95%B  
 Flow Rate: 1.2 ml/min  
 Column: Eclipse XDB-C18,4.6\*150mm,5um  
 Oven Temperature: 40 C



Integration Results for DAD1 A, Sig=214,4 Ref=off

RetTim	Width	Area	Height	Area%
8.23	0.04	9101.35	2595.36	99.54
8.60	0.04	33.39	13.22	0.37
10.51	0.05	8.47	2.25	0.09

Integration Results for DAD1 B, Sig=254,4 Ref=off

RetTim	Width	Area	Height	Area%
8.23	0.04	5399.65	2228.90	99.65
8.60	0.05	19.17	5.77	0.35