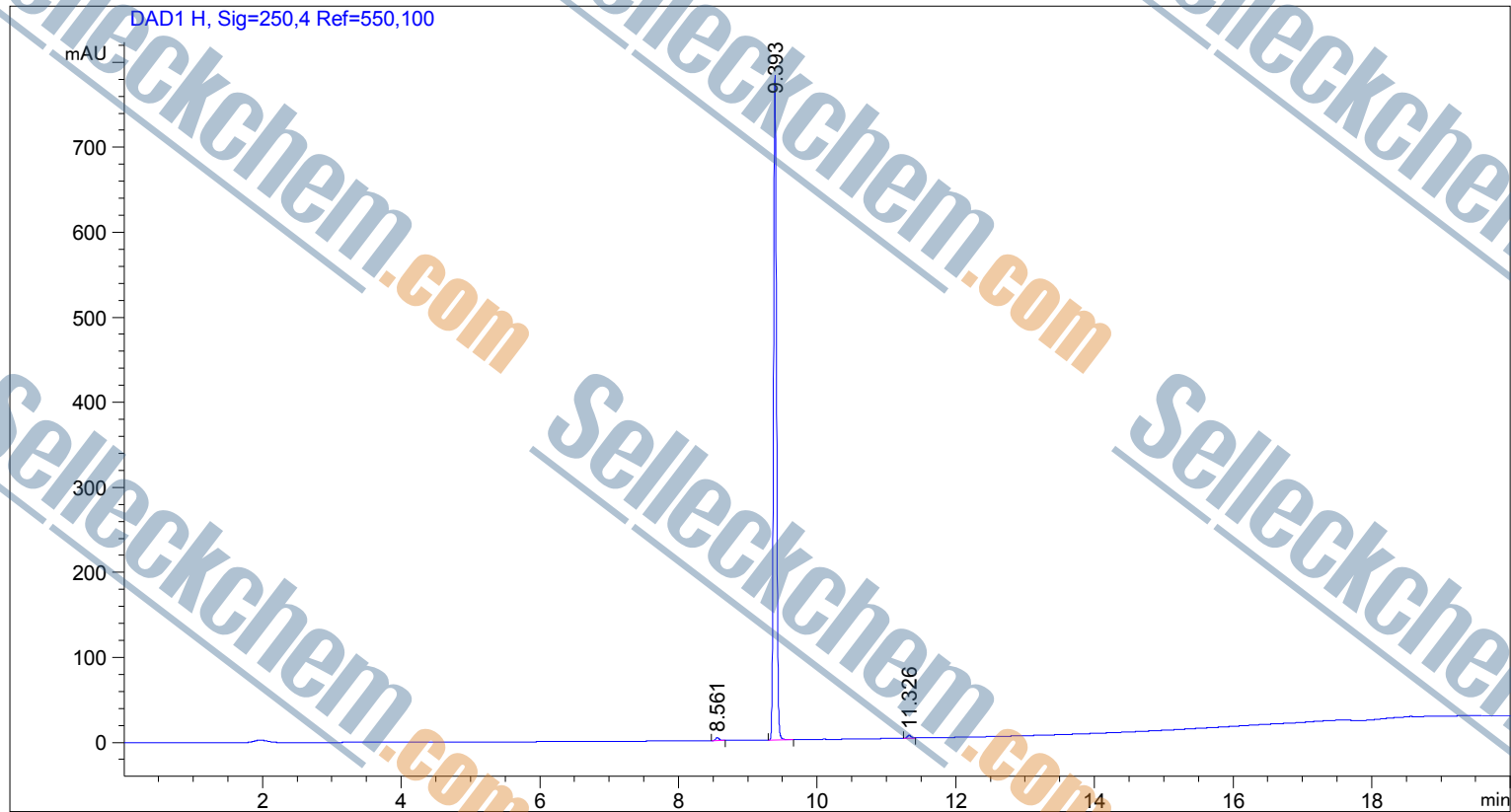


```
=====
Acq. Operator   : SYSTEM                      Seq. Line :    1
Acq. Instrument : 12601c                     Location  : Vial 20
                                                Inj Volume: 2.000 µl
=====
```

Additional Info : Peak(s) manually integrated



Area Percent Report

```
Sorted By       : Signal
Multiplier      : 1.0000
Dilution        : 1.0000
Use Multiplier & Dilution Factor with ISTDs
```

Signal 1: DAD1 H, Sig=250,4 Ref=550,100

Peak #	RetTime [min]	Type	Width [min]	Area [mAU*s]	Height [mAU]	Area %
1	8.561	BB	0.0549	11.90535	3.31886	0.5050
2	9.393	BB	0.0463	2332.17700	782.09473	99.0210
3	11.326	BV	0.0569	11.53443	3.01904	0.4741

```
Totals :                2357.61678  788.93263
```

*** End of Report ***