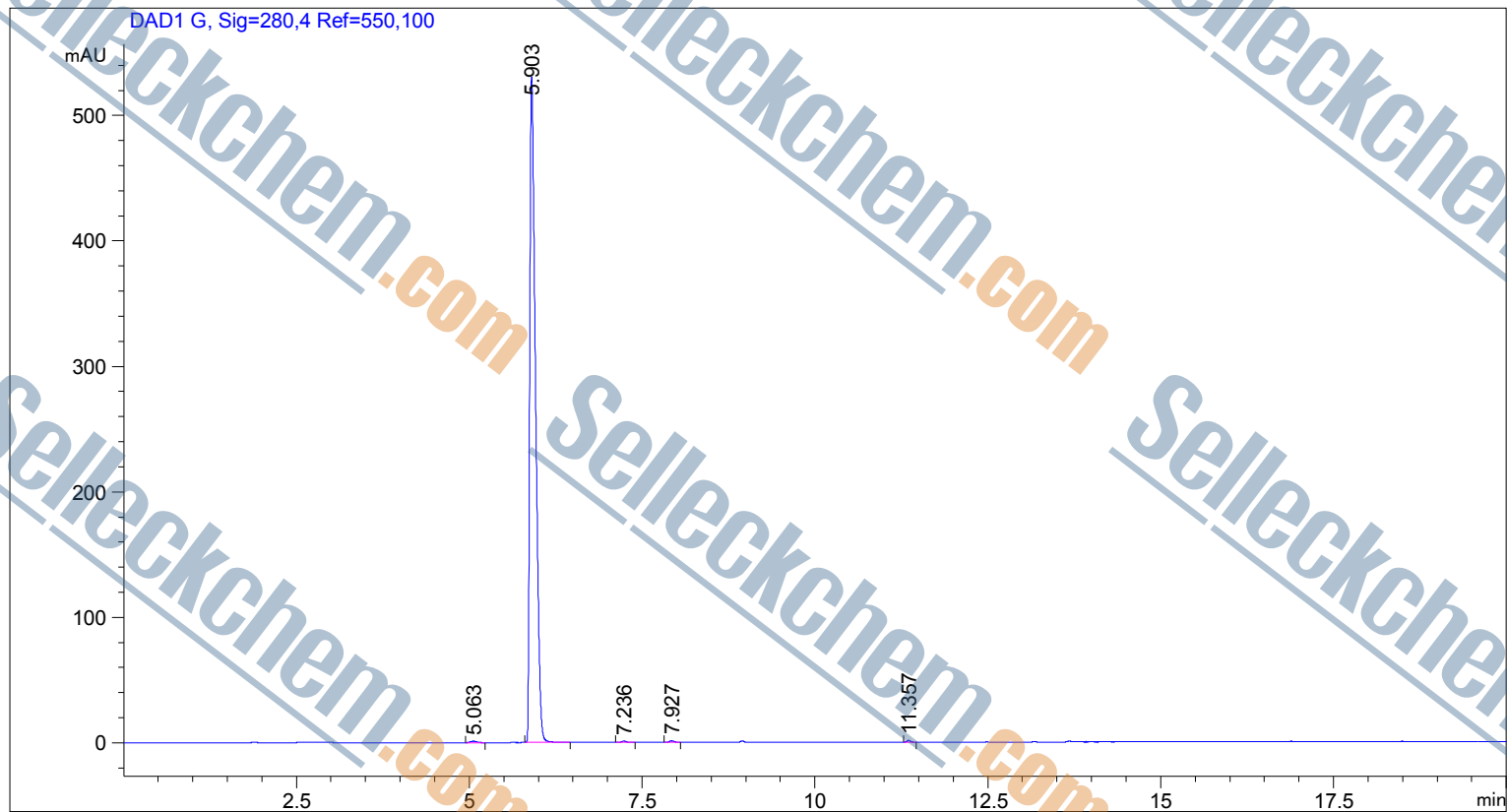


```

=====
Acq. Operator   : SYSTEM                      Seq. Line :    2
Acq. Instrument : 12601c                     Location  : Vial 94

                                           Inj Volume : 2.000 µl
Different Inj Volume from Sample Entry! Actual Inj Volume : 4.000 µl
=====
    
```



Area Percent Report

```

Sorted By      : Signal
Multiplier     : 1.0000
Dilution       : 1.0000
Use Multiplier & Dilution Factor with ISTDs
    
```

Signal 1: DAD1 G, Sig=280,4 Ref=550,100

Peak #	RetTime [min]	Type	Width [min]	Area [mAU*s]	Height [mAU]	Area %
1	5.063	BB	0.0974	6.93029	1.12436	0.2233
2	5.903	BB	0.0892	3079.04053	530.49817	99.2220
3	7.236	BB	0.0742	5.05346	1.05872	0.1628
4	7.927	BB	0.0705	6.53547	1.43881	0.2106
5	11.357	BB	0.0613	5.62421	1.41768	0.1812

Totals : 3103.18397 535.53773

=====
*** End of Report ***