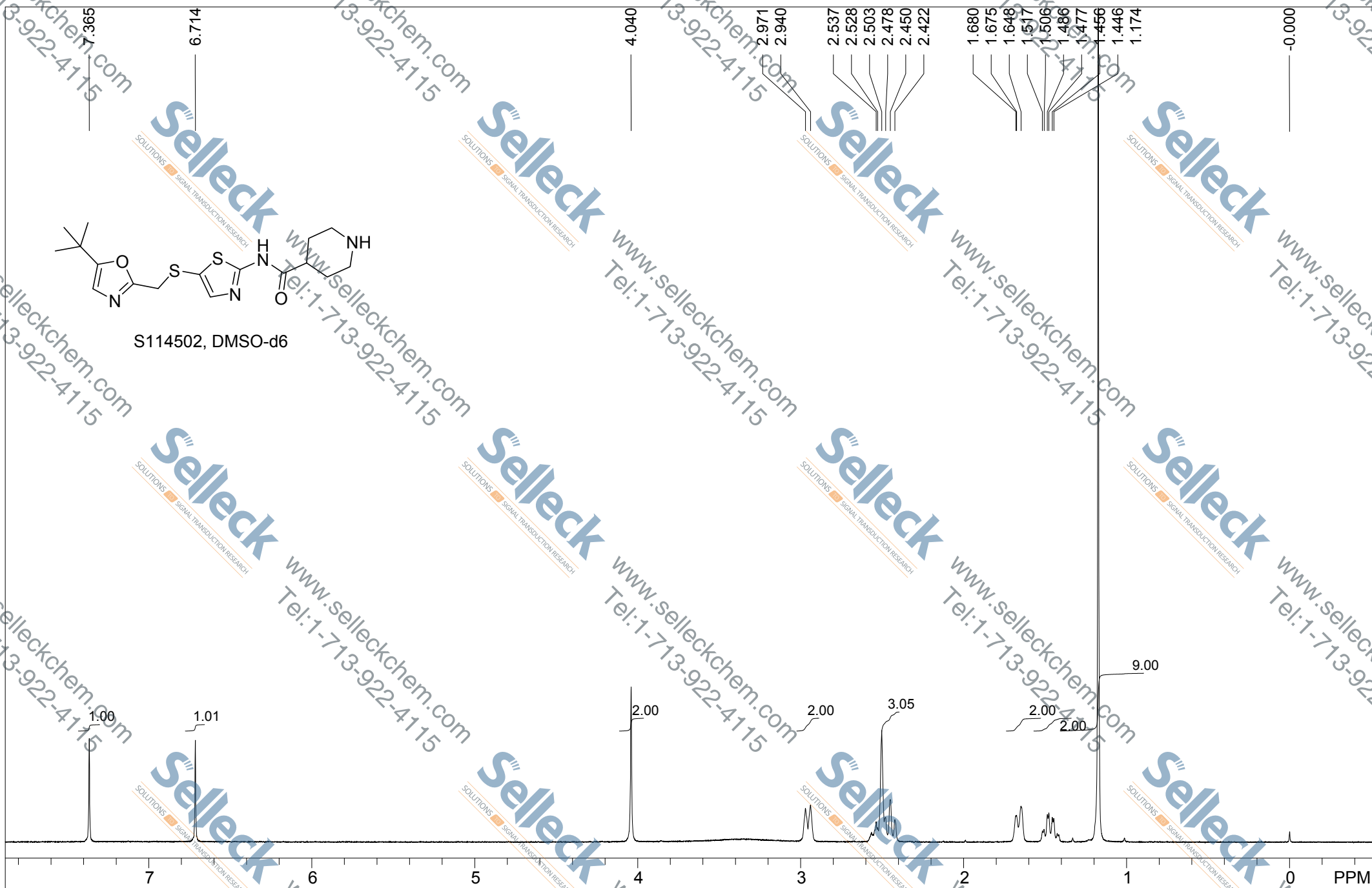


S114502, DMSO-d6



Std proton:blank line

F1: 399.647	F2: 100.500	SW1: 8013	OF1: 2012.2	PTS1d: 16416 , 32768
EX: s2pul		PW: 7.2 us	PD: 2.0 sec	NA: 8
			LB: 0.0	Nuts - SS114502 SNS-032