

Selleck
SOLUTIONS SIGNAL TRANSDUCTION RESEARCH

Selleck
SOLUTIONS SIGNAL TRANSDUCTION RESEARCH

Selleck
SOLUTIONS SIGNAL TRANSDUCTION RESEARCH

selleckchem.com
Tel: 1-713-922-4115

www.selleckchem.com
Tel: 1-713-922-4115

www.selleckchem.com
Tel: 1-713-922-4115

www.selleckchem.com
Tel: 1-713-922-4115

Selleck
SOLUTIONS SIGNAL TRANSDUCTION RESEARCH

Selleck
SOLUTIONS SIGNAL TRANSDUCTION RESEARCH

Selleck
SOLUTIONS SIGNAL TRANSDUCTION RESEARCH

selleckchem.com
Tel: 1-713-922-4115

www.selleckchem.com
Tel: 1-713-922-4115

www.selleckchem.com
Tel: 1-713-922-4115

www.selleckchem.com
Tel: 1-713-922-4115

Selleck
SOLUTIONS SIGNAL TRANSDUCTION RESEARCH

Selleck
SOLUTIONS SIGNAL TRANSDUCTION RESEARCH

Selleck
SOLUTIONS SIGNAL TRANSDUCTION RESEARCH

selleckchem.com
Tel: 1-713-922-4115

www.selleckchem.com
Tel: 1-713-922-4115

www.selleckchem.com
Tel: 1-713-922-4115

www.selleckchem.com
Tel: 1-713-922-4115

Selleck
SOLUTIONS SIGNAL TRANSDUCTION RESEARCH

Selleck
SOLUTIONS SIGNAL TRANSDUCTION RESEARCH

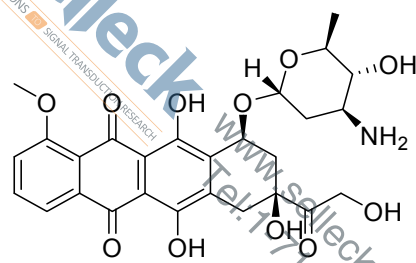
Selleck
SOLUTIONS SIGNAL TRANSDUCTION RESEARCH

selleckchem.com
Tel: 1-713-922-4115

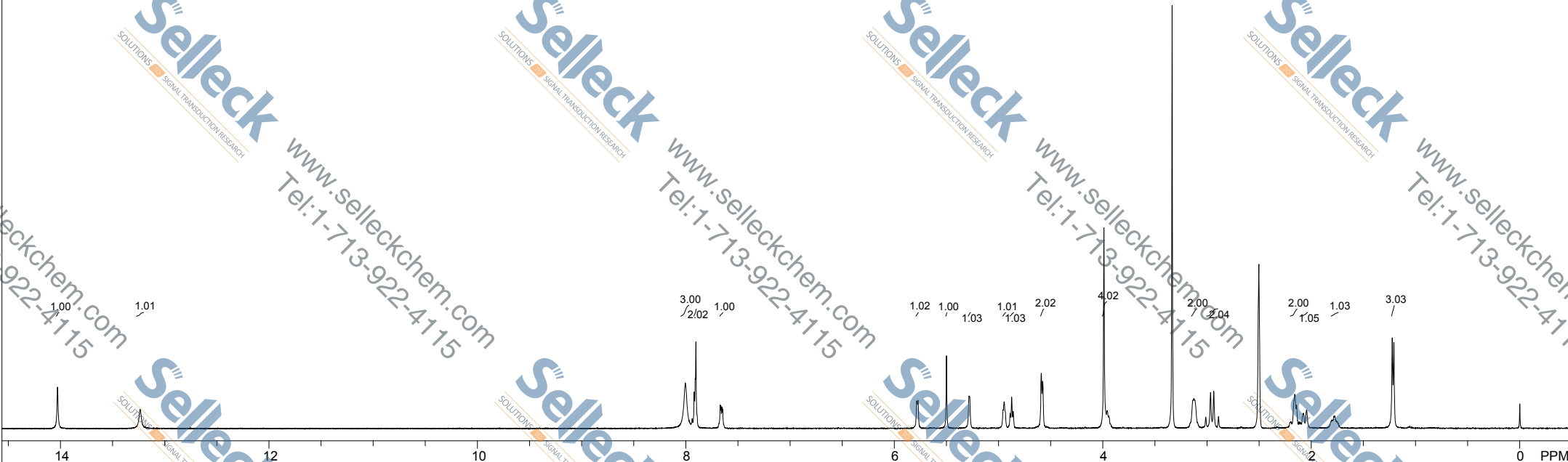
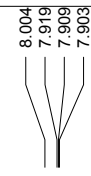
www.selleckchem.com
Tel: 1-713-922-4115

www.selleckchem.com
Tel: 1-713-922-4115

www.selleckchem.com
Tel: 1-713-922-4115



HCl
S122302, DMSO-d6



Std proton: blank line	F1: 399.637	F2: 100.498	SW1: 7225	OF1: 2811.8	PTS1d: 14803, 16384
EX: s2pul			PW: 7.2 us	NA: 8	Nuts - S122302 Epirubicin HCL
			PD: 2.0 sec	LB: 0.0	