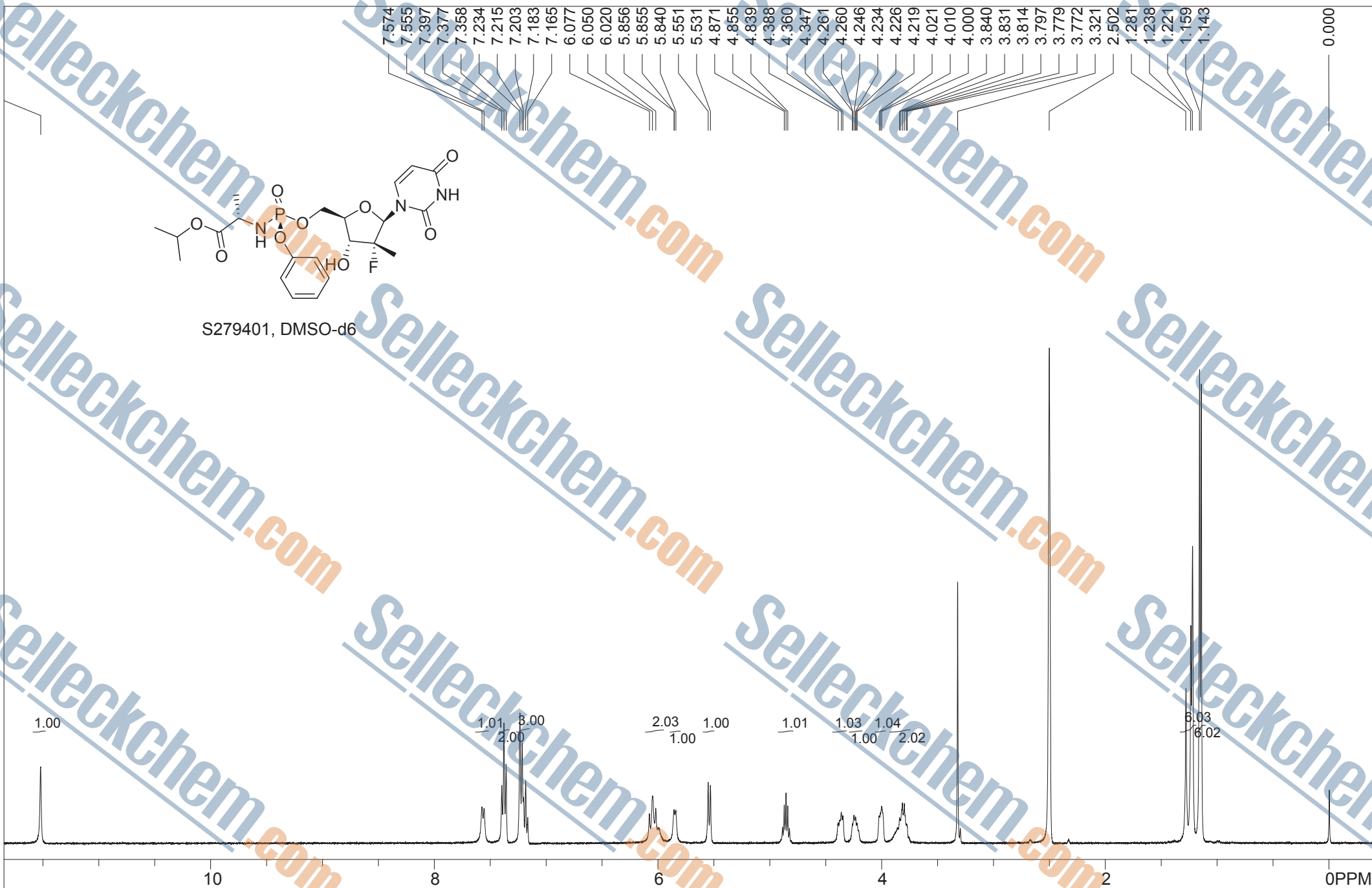


S279401, DMSO-d6



.blank line		SW1: 8803		OF1: 3604.3		PTS1d: 32768 , 32768	
F1: 399.665	F2: 100.504	PW: 6.8 us	PD: 1.0 sec	NA: 8	LB: 0.0	Nuts - S279401 Sofosbuvir(PSI-7977)	
EX: s2pul							