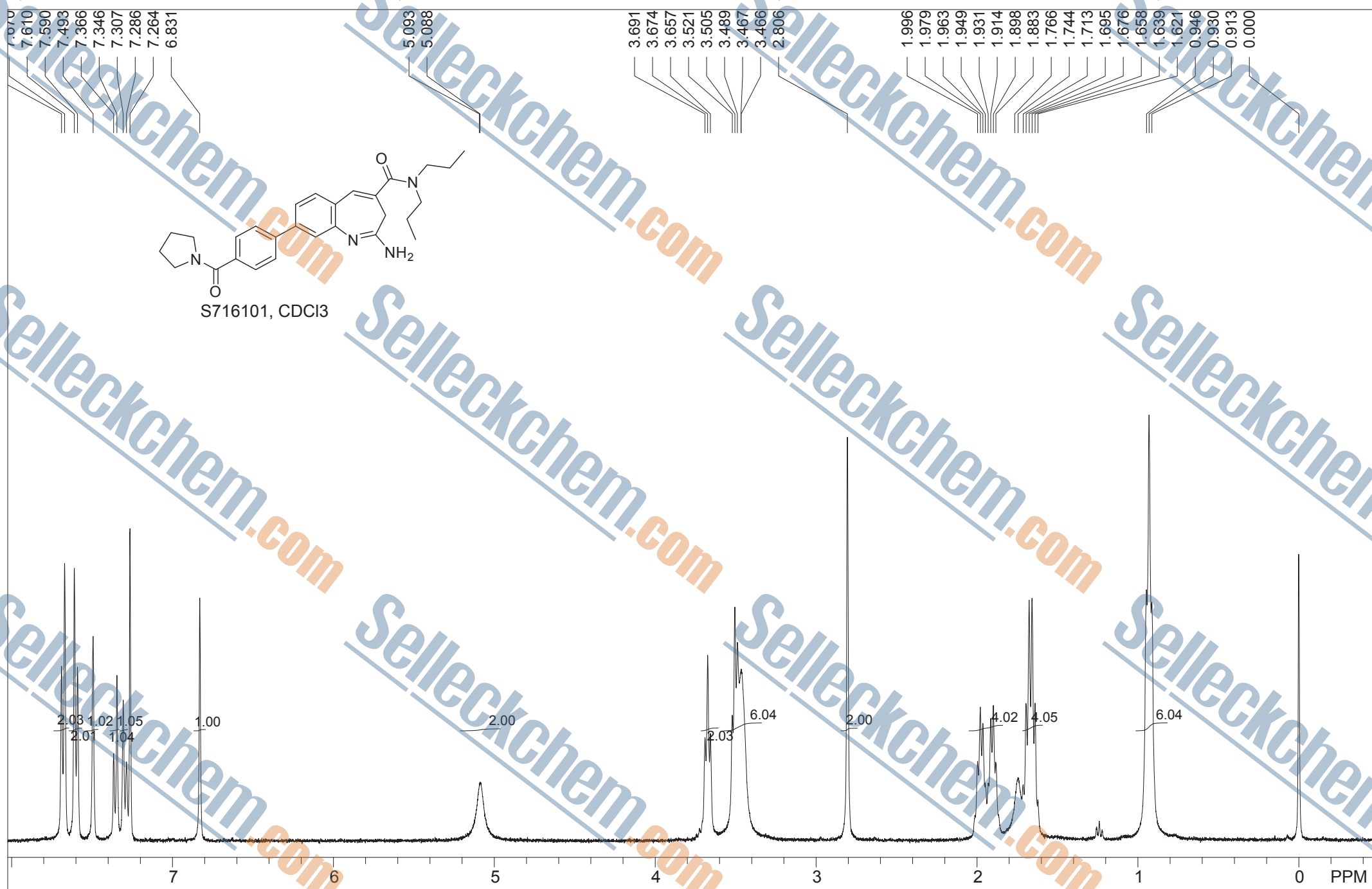


S716101, CDCl<sub>3</sub>



STANDARD PROTON PARAMETERSga:blank line:blank line:blank line

F1: 399.672	F2: 100.506	SW1: 8803	OF1: 3599.0	PTS1d: 32768 , 32768
EX: s2pul	PW: 6.5 us	PD: 1.0 sec	NA: 8	LB: 0.0
				Nuts - \$S716101 VTX-2337 CDCl3