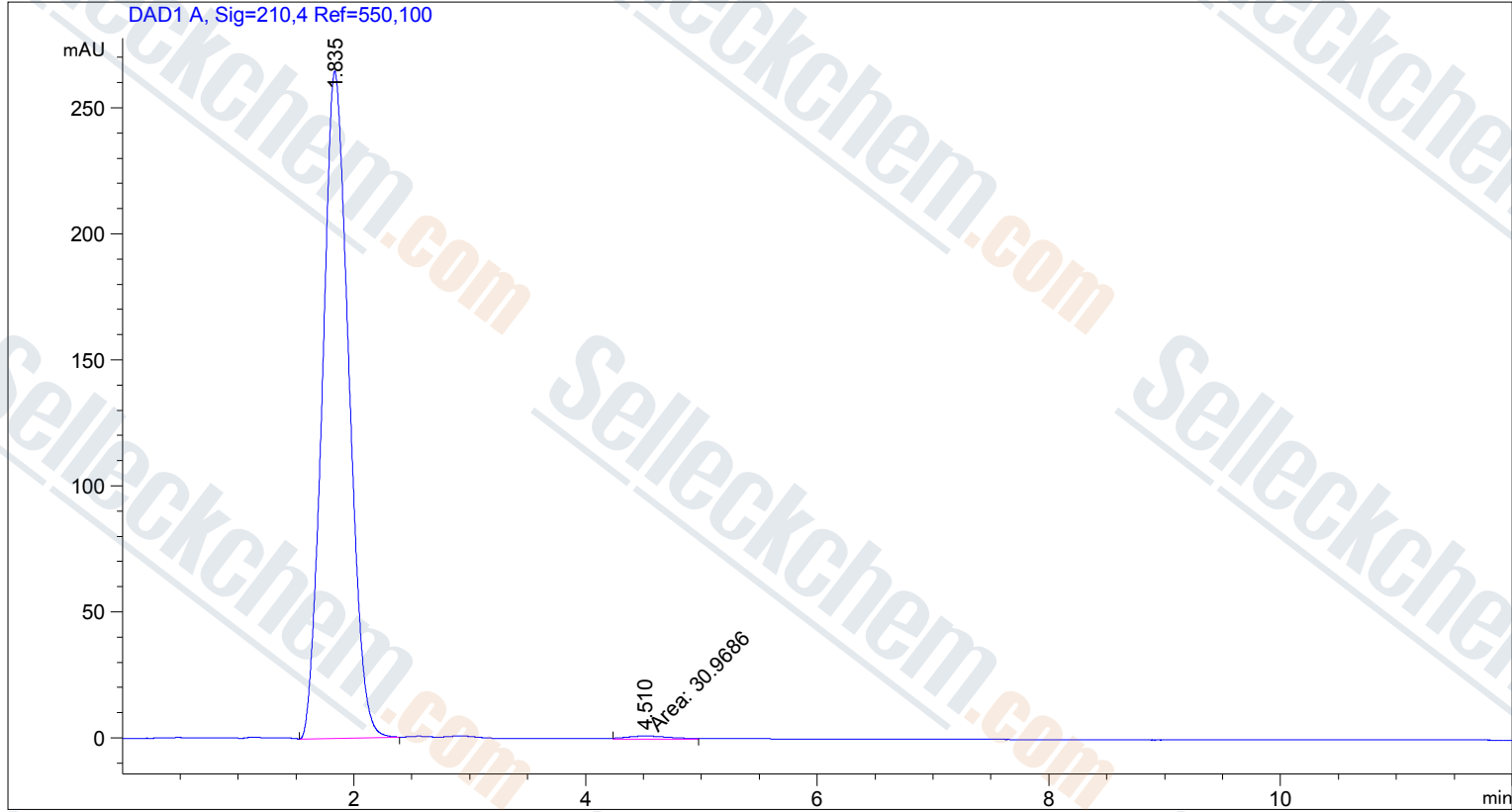


=====  
 Acq. Operator : SYSTEM                      Seq. Line : 1  
 Acq. Instrument : 12601c                    Location : Vial 51

Inj Volume : 2.000 µl

Different Inj Volume from Sample Entry! Actual Inj Volume : 10.000 µl

Additional Info : Peak(s) manually integrated



=====  
 Area Percent Report  
 =====

Sorted By : Signal  
 Multiplier : 1.0000  
 Dilution : 1.0000  
 Use Multiplier & Dilution Factor with ISTDs

Signal 1: DAD1 A, Sig=210,4 Ref=550,100

Peak #	RetTime [min]	Type	Width [min]	Area [mAU*s]	Height [mAU]	Area %
1	1.835	BB	0.2422	4178.07324	264.66940	99.2642
2	4.510	MM	0.4308	30.96856	1.19809	0.7358

Totals :                                      4209.04181    265.86749

=====  
 \*\*\* End of Report \*\*\*