

7.501
7.479
7.370
7.349
7.285
7.260
6.967
6.945
6.881

5.608

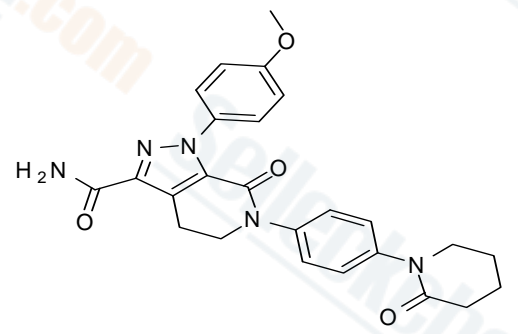
4.150
4.133
4.116
3.841
3.618
3.409
3.392
3.376

2.571

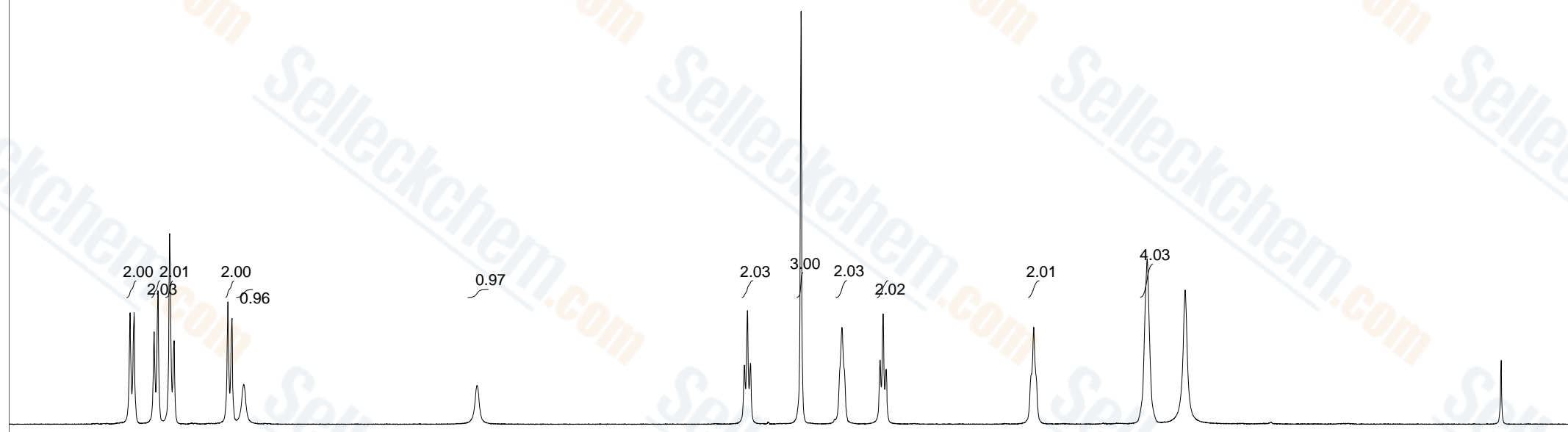
1.952

1.745

0.020



S159302, CDCl3



8 7 6 5 4 3 2 1 0 PPM

Std proton:blank line

F1: 399.646	F2: 100.500	SW1: 7225	OF1: 2814.5	PTS1d: 14803 , 16384
EX: s2pul	PW: 7.2 us	PD: 2.0 sec	NA: 8	LB: 0.0
				Nuts - \$S159302 Apixaban CDCl3