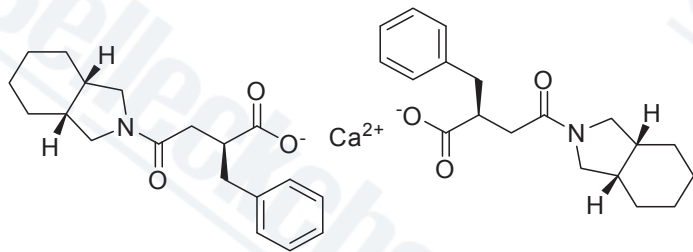
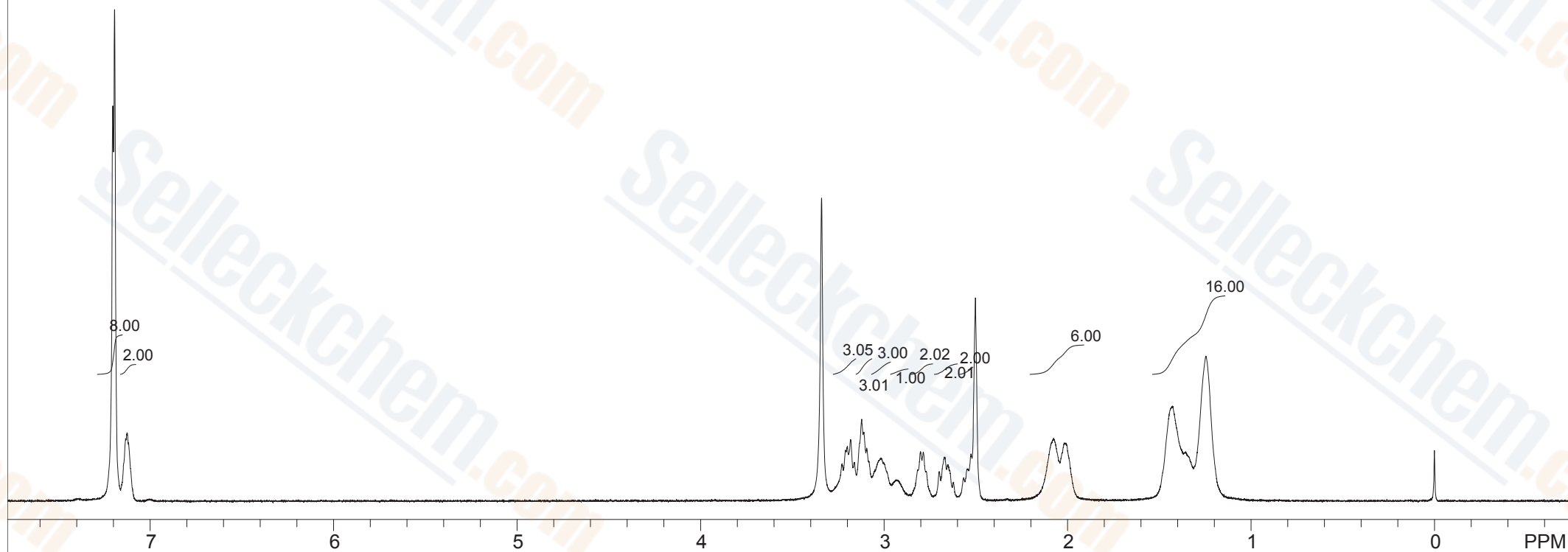


7.203
7.193
7.134
7.125
7.118

3.229
3.210
3.200
3.182
3.162
3.122
3.111
3.095
3.341
3.051
3.017
3.003
2.933
2.931
2.817
2.801
2.787
2.700
2.672
2.655
2.567
2.546
2.526
2.503
2.077
2.047
2.042
2.018
2.010
2.008
1.426
1.246
-0.000



S207301, DMSO-d6



Std proton;blank line

F1: 399.647	F2: 100.500	SW1: 8013	OF1: 2012.4	PTS1d: 16416 , 32768
EX: s2pul	PW: 7.2 us	PD: 2.0 sec	NA: 8	LB: 0.0
Nuts - \$S207301 Mitiglinide calcium				