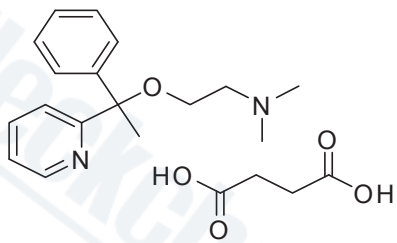
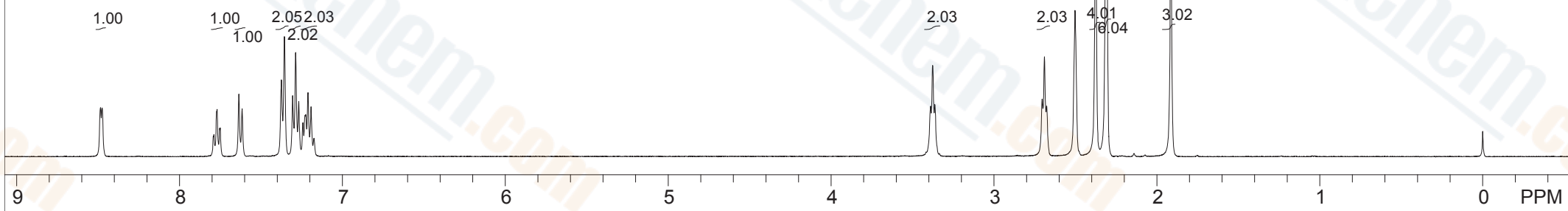


8.485 8.475 7.769 7.754 7.750 7.636 7.616 7.375 7.356 7.306 7.287 7.268 7.243 7.229 7.226 7.212 7.193 3.389 3.377 3.364 2.705 2.690 2.677 2.503 2.377 2.311 1.915 0.000



S424001, DMSO-d6



:blank line		Std proton		:blank line	
F1: 399.648	F2: 100.500	SW1: 7225		OF1: 2811.4	PTS1d: 14803 , 16384
EX: s2pul		PW: 7.2 us	PD: 2.0 sec	NA: 8	LB: 0.0
					Nuts - \$S424001 Doxylamine succinate